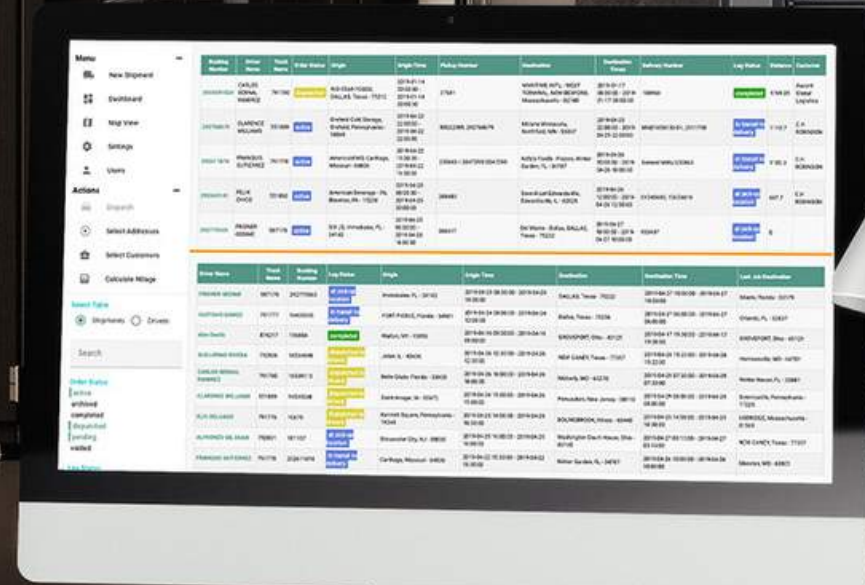
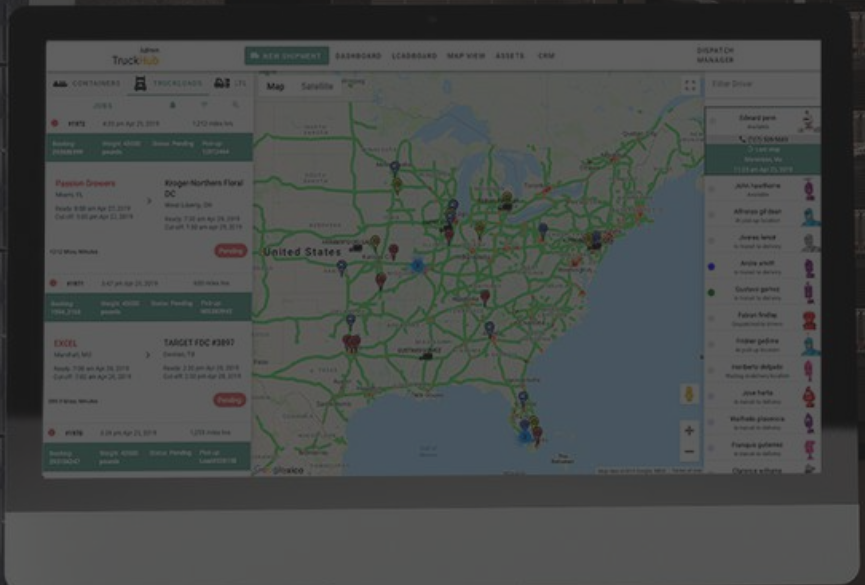
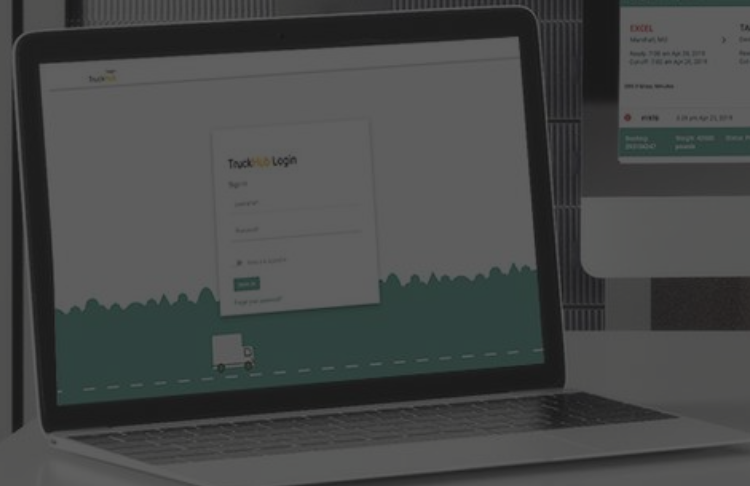


TruckHub

tms | transportation management system



the problems growing in the multi-billion dollar 3pl industry

industry
reported
problems:

- Lack of technology
- Unexplained/Unreasonable wait times or delays
- No driver or cargo accountability/transparency
- Unreliable driver recruitment platforms; truck driver shortage
- Poor communication among drivers, dispatchers, & shippers



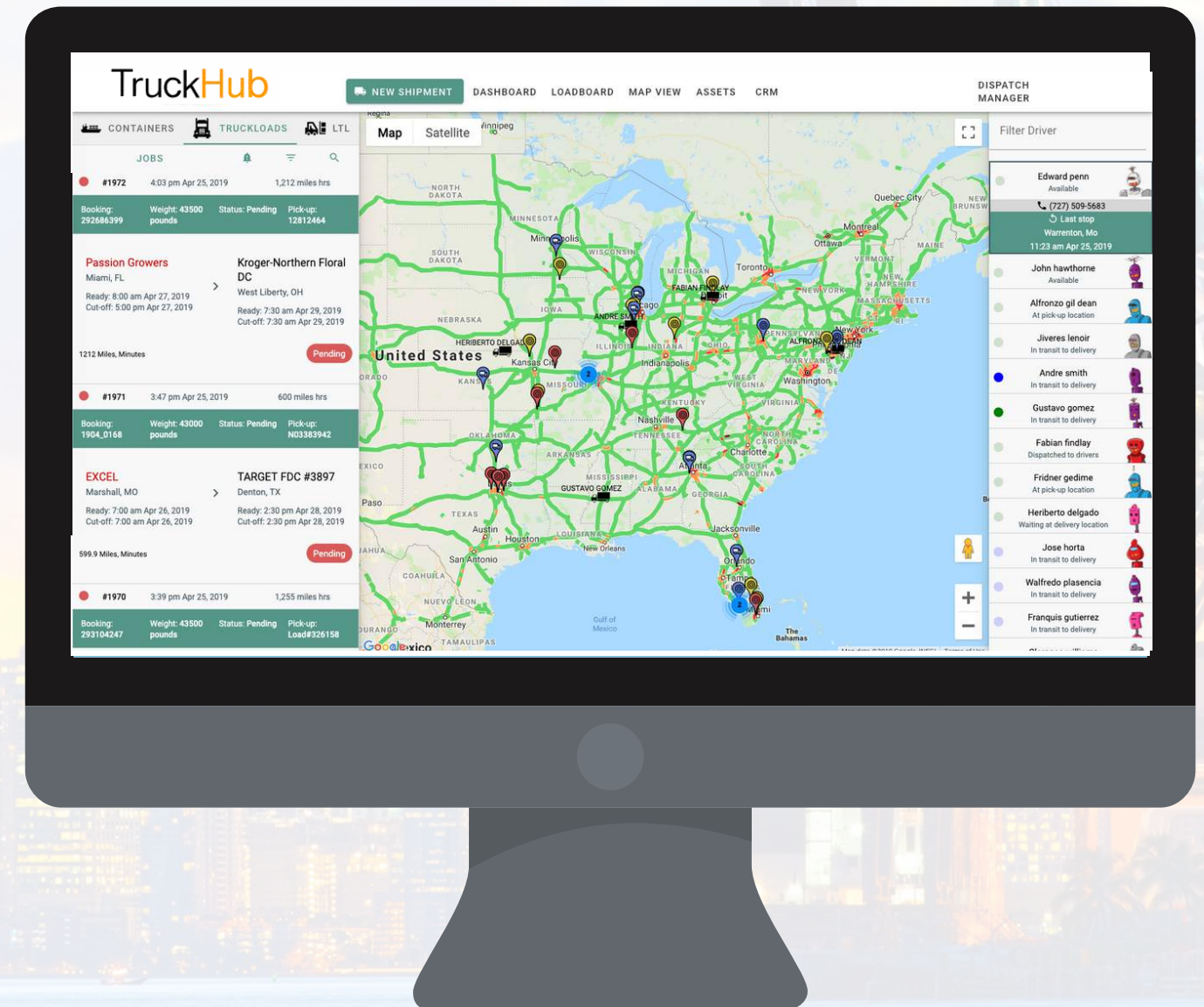
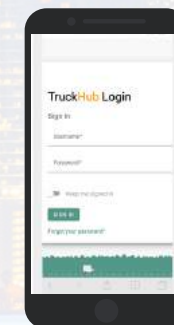
... yet a transparent, digital solution is here

TruckHub | Transportation Management System (TMS)



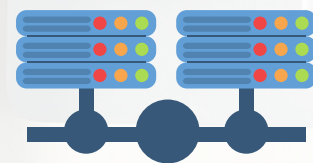
Cloud-based TMS enabling shippers, dispatchers, and drivers along the entire 3PL chain with on-demand functionality, top-down visibility, and cross-integrations into a single, user-focused platform.

Model Proven in the Active South Florida (LTL & Container Drayage & Nationwide Trucking FTL) 3PL marketplace.

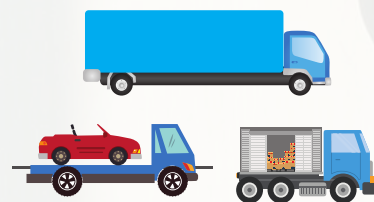


empowering all with on-demand technology

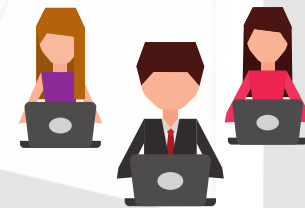
TruckHub | Connecting users along the entire 3PL process with on-demand features



API & Data-Base Integrations



Full Fleet Management



Multi-User, Role Specific Functionality



Customer Relationship Management (CRM)



Reporting & Analytics



Driver Communication, Recruitment, & Verification

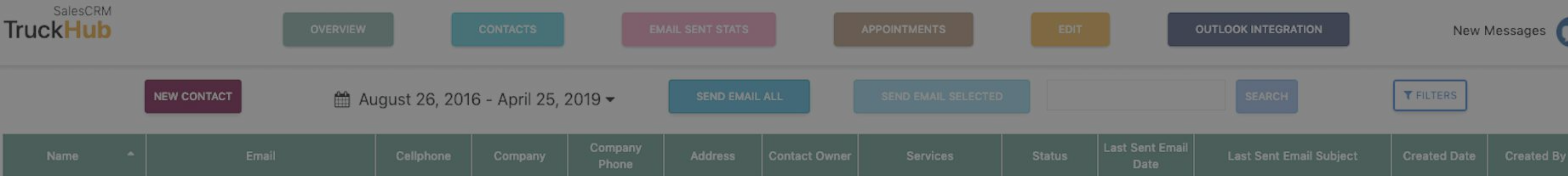


GPS Tracking, Traffic Updates, Document Verification



Geo-Fencing & Granular Targeting



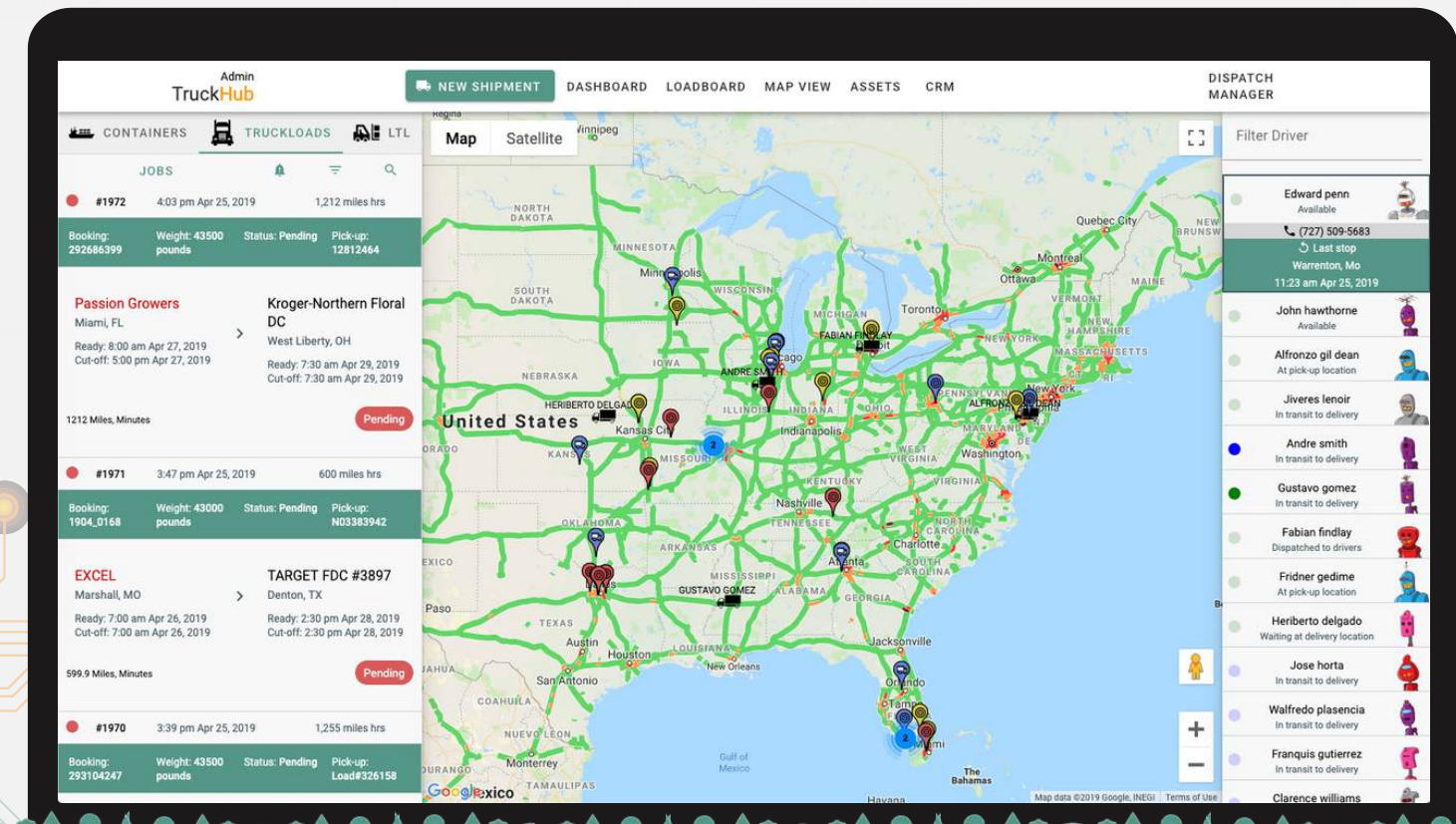


connecting all the dots in your 3pl operations

API integrations allow customers to transfer data & avoid repeating data entry with the click of a button.

The **Map View** feature displays your entire fleet, with a number of supplementary functions, allowing you to control your assets in real-time.

- Ports (Import / Export)
- Microsoft Outlook
- Indeed.com
- Tideworks POMTOC
- Quickbooks
- MailChimp
- Google Maps
- SFCT



completing trips with speed, accuracy, & transparency

Vehicle Arrives at Port of Miami,
Automatically Notifying Dispatchers
in Real-Time



Driver Validates Pick-Up
& Continues Route To
Designated Destination

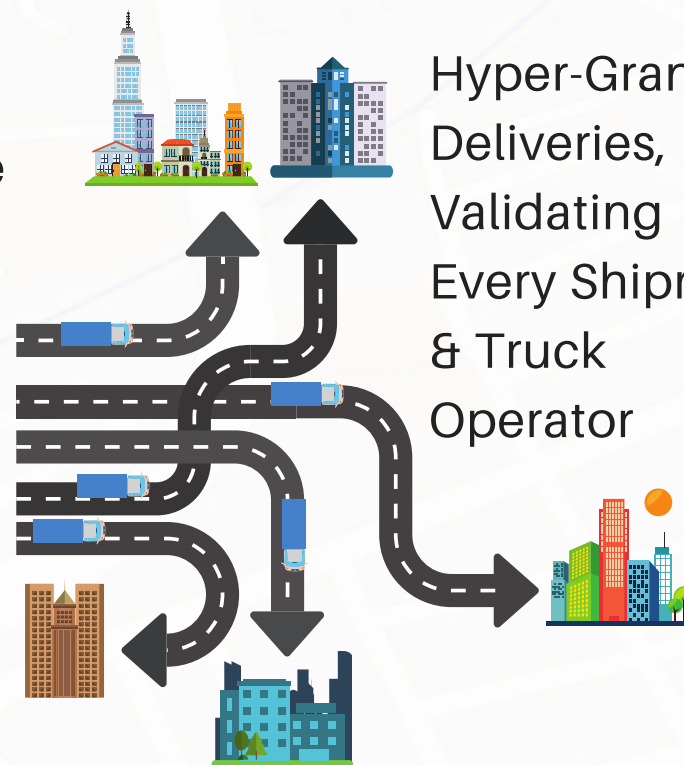
Driver Confirms
Pick-Up, via
TruckHub
Mobile App.



Trucker Drops Off
Container For Nationwide
Transportation (FTL) &
Local Distribution (LTL)



Hyper-Granular
Deliveries,
Validating
Every Shipment
& Truck
Operator



Control Your Entire Fleet, Operations,
& Team From A Single Digital Platform



Dispatch Manager
Initiates Trip

THE PROCESS



beta-tested in the South Florida marketplace

87898
of Total
Deliveries (2019-)

44
of Avg. Operators on
TruckHub, Per Day (2019-)

19
of Avg. Operators on
TruckHub, Per Day (2019-)

Less Than Truckload
(LTL) & Last Mile

7
of Avg. Miles Per Gallon Saved,
Per Delivery Route (2019-)

37
of Avg. Driver-Dispatcher
Message Per Day (2019-)

Nationwide Full
TruckLoad (FTL)

Container
Drayage

11
of Avg. Assets Managed,
Per Delivery (2019-)

27679
of Avg. Deliveries (2019-)

1787678
of Total Shipments (2019-)



the growing 3PL industry: today & tomorrow



The Freight Industry grew **4%**, setting a **20 Year Record High***

* Reuters & Supply Chain Dive



Estimated Industry Value: **\$800 US Billion***

* Transportation Topics & Trucks.com



2.3% projected growth, per year*

* Reuters & U.S. Department of Transportation

\$837 US Billion In Growth
2020

\$856 US Billion In Growth
2021

\$877 US Billion In Growth
2022



future growth

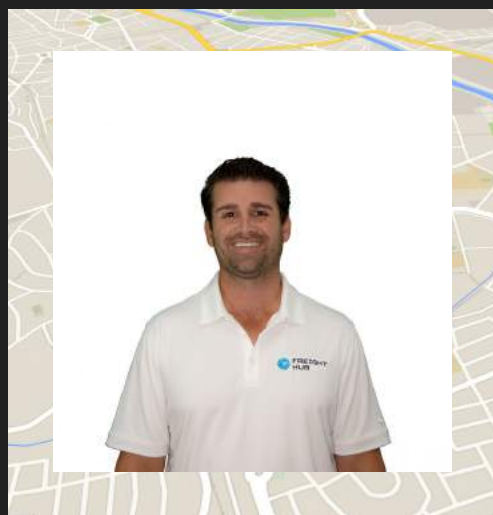
Data-Driven Operations

- A subscription-based platform, which allows for small, midsize and large trucking outfits that cater to nationwide full truckload (FTL), less than truckload (LTL) & container drayage markets.
- To have a system that allows improvement in their day-to-day operations, while providing their customers and drivers a platform that makes communication and visibility issues a thing of the past and a standard in what has always been an outdated facet of the transportation chain.

The screenshot displays the Admin TruckHub dashboard. At the top, there are navigation tabs: NEW SHIPMENT, DASHBOARD, LOADBOARD, MAP VIEW, ASSETS, CRM, and DISPATCH MANAGER. Below these, there are icons for CONTAINERS, TRUCKLOADS, and LTL. The main area is divided into a left sidebar with job listings and a central map of the United States. The job listings include details such as job ID, booking number, weight, status, and pickup/delivery dates. The map shows various cities and states with colored markers and lines representing trucking routes. On the right side, there is a 'Filter Driver' section with a list of drivers and their current status, such as 'Available', 'At pick-up location', 'In transit to delivery', and 'Waiting at delivery location'.

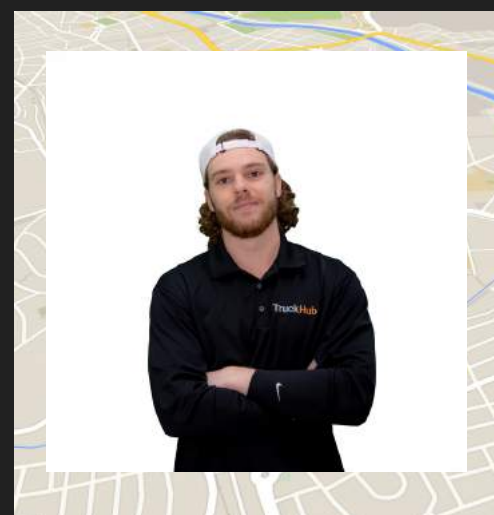

```
132 em.phone{
133   display: inline-block;
134   width: 12px;
135   height: 14px;
136   float: left;
137   margin: 2px 7px 0 0;
138 }
139 }
140 em.phone{
141   background: url(../img/phone1.co.png) no-repeat center;
142   display: inline-block;
143   width: 20px;
144   height: 18px;
145   float: left;
```

the faces behind the innovation



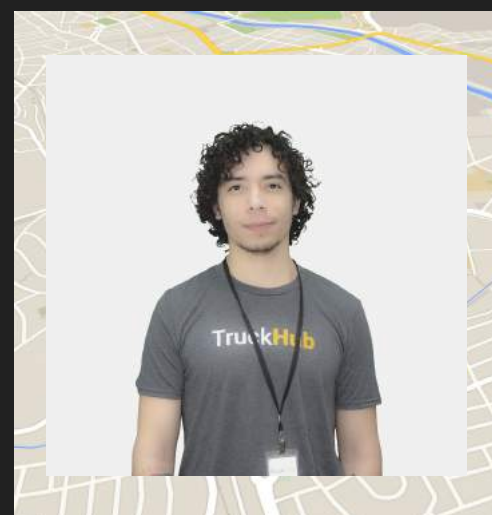
Luis Lopez

Founder &
CEO



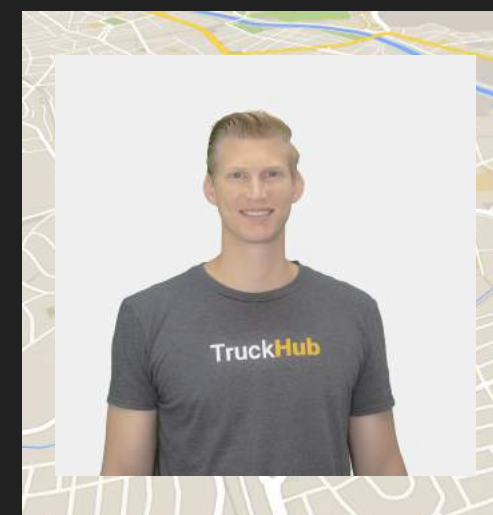
Robert Dillion

Technical Product
Manager



Daniel Moreno

Senior Software
Engineer



Philip Smith

Mobile Application
Developer



delivery completed

mailing address

8005 NW 80 Street,
Unit #1
Miami, Florida 33166

email address

Info@MyTruckHub.com

phone number

305.439.0333

"TruckHub seamlessly updated my entire 3PL process; the *CRM*, *Map View*, and *Driver Recruitment* platforms enhance my day-to-day operations flawlessly."



THE END

